

CLALLAM MRC MEETING AGENDA

February 20, 2025
5:30 p.m. – 7:00 p.m.
Hybrid Meeting



Zoom Meeting Link: <https://us06web.zoom.us/j/85314804485>

Meeting ID: 853 1480 4485

Passcode: 12345

For more information about the MRC, please contact Cathy Lear at (360) 417-2361

Welcome by Vice Chair Ann Soule / Call to Order / Roll Call

- Determination of quorum

Approval of Minutes

- Review and approval of January minutes

Public Comment on agenda items, limited to 3 minutes per participant at the discretion of the Chair

Presentations

- 10 min – Bree Turner, Habitat Strategic Development Lead – Development of the Marine Vegetation Implementation Strategy
- 25 min – Cynthia Harbison, Washington DNR – Statewide Kelp Forest and Eelgrass Meadow Health and Conservation Plan – Elwha Unit Priority Habitat
- 20 min – Joint Q&A and Discussion

Announcements

- **Extra meeting next week for project development work session, FY 2025-27: Feb 24, 4-7pm**
- Today and next week are both “special meetings” due to atypical dates – only items on the agenda may be discussed
- Recruiting for member representing the Community At-Large, Alternate representing the Lower Elwha Klallam Tribe
- MRC Chair & Vice Chair election upcoming in May
- Thank you everyone that participated in the OPMA training
- March 6th Ediz Hook revegetation

Committee and Project Reports if an update is needed

- NWSC monthly update – Alan Clark
- Comprehensive plans subcommittee
 - § Subcommittee: Alan Clark, Bob Vreeland, Ed Bowlby
 - § Link to current plan: [Clallam County Comp Plan update & Clallam County Climate/Hazard Mitigation Plan update](#). Please complete [Public Survey](#) if you haven't yet conveying your opinion on all or some topics (closes 3/25/25). For reference: [DCD Webpage](#)
 - § [Port Angeles City Comp Plan update](#)
 - § [Sequim Comp Plan update: Future of Sequim survey](#)

2025 Meetings

January 16 (Thu)
February 20 (Thu)
March 17

April 21
May 19
June 16

July 21
August 18
September 15

October 20
November 17
December 15

- Interns – (on hiatus unless we get a new lead)
- Olympia Oyster – Chris Burns
- Forage Fish – Ed Bowlby, Alan Clark, Helle Andersen, Iona Bociu
- Elwha Beach Stewardship – Helle Andersen
- Ediz Hook Revegetation – Helle Andersen & Allyce Miller
- Sound Toxins – Nancy Stephanz
- Shellfish Biotoxins – Bob Vreeland
- Pinto Abalone – Jeff Ward & Alan Clark
- Pigeon Guillemot – Ed Bowlby
- Kelp surveys – Alan Clark & Jeff Ward
- Education & outreach
 - § Coasters – Ann Soule
 - § Next new displays: crab, pigeon guillemots – Ann, Amelia
 - § European Green Crab status update – Ioana Bociu
 - § Oil spill response
 - State policy on rescue tug – Mike Doherty
 - HAZWOPER oiled wildlife trainings – Ed, Alicia, Rebecca, Nancy

New or special business items

- Letter proposed for discussion: Shoreline development along 3 Crabs Rd
- Letter received/response from leadership: Salmon restoration, from Clallam County/Sequim resident John Worthington
- Roles and responsibilities / “Duties” document – for review and potential approval
- Project development for the next biennium (10/2025 - 9/2027)
 - Special work session on February 24, 4-7pm (see emails for details)
 - Reminder: all projects need enthusiastic lead and co-lead to be chosen (will be determined at 24th work session)
 - *Preliminary project proposals, attached:* Olympia oysters, Pinto abalone, Elwha beach stewardship, pigeon guillemot, green crab (trapping on Dungeness Spit), Dungeness & Protection Island nearshore restoration, shoreline armoring, Ediz Hook debris removal, Marine Discovery Center educational signage, advisory capacity
 - *Additional projects to consider:* Blue ROV, derelict gear removal, creosote piling removal, HAZWOPER / oil spill response training, forage fish, kelp monitoring

Discussion of next meeting date and agenda

- **Next meeting Monday, February 24 – project planning work session**
- Next regular meeting Monday, March 17
- Call for new agenda items

Public Comment related to agenda items only (due to special meeting status) *limited to 3 minutes per participant at the discretion of the Chair*

Adjourn

2025 Meetings

January 16 (Thu)
February 20 (Thu)
March 17

April 21
May 19
June 16

July 21
August 18
September 15

October 20
November 17
December 15

Clallam County DCD is inviting you to a scheduled Zoom meeting.
Topic: MRC

Join Zoom Meeting

<https://us06web.zoom.us/j/85314804485?pwd=N3dMbHRyL3l5TnpKNGtVSGtWYk5VQT09>

Meeting ID: 853 1480 4485

Passcode: 12345

One tap mobile

+12532158782,,85314804485#,,,,*12345# US (Tacoma)

Dial by your location

+1 253 215 8782 US (Tacoma)

2025 Meetings

January 16 (Thu)

February 20 (Thu)

March 17

April 21

May 19

June 16

July 21

August 18

September 15

October 20

November 17

December 15



January 2025 Draft Meeting Minutes

Date: Thursday, January 16, 2024

Time: 5:32 – 7:12

Location: Hybrid meeting, Zoom and Clallam County Board of Commissioners' Meeting Room
Minutes prepared by Amelia Kalagher

Member Roll

	Member	Present?	Alternate	Present?
Academic Community	Ed Bowlby	X	Ioana Bociu	
At Large	Alan Clark (<i>NWSC Rep.</i>)	X	Mary Sue Brancato	
At Large	[vacant seat]	---	Ray Kirk	
Conservation & Environmental Interests	Robert Vreeland	X	Nancy Stephanz	X
Development Community	Christopher Rumble		[vacant seat]	---
District I	Jeff Ward	X	[vacant seat]	---
District II	Ann Soule (<i>Vice Chair</i>)	X	Lyn Muench	X
District III	Mike Doherty		Dann May	X
Jamestown S'Klallam Tribe	Christopher Burns	X	Robert Knapp	excused
Lower Elwha Klallam Tribe	Allyce Miller	X	[vacant seat]	---
Makah Tribe	[vacant seat]	---	[vacant seat]	---
Marine Related Recreation & Tourism	Alicia Amerson	excused	Helle Andersen	X
Port Angeles City Council	LaTrisha Suggs (<i>Chair</i>)	X	Navarra Carr	
Port of Port Angeles Commission	Jesse Waknitz		Katharine Frazier	
Sequim City Council	Meggan Uecker		Harmony Rutter	

Staff and Others Present

Cathy Lear (CCMRC Coordinator, Clallam County Habitat Biologist), Rebecca Mahan (CC Habitat Biologist), Amelia Kalagher (CCMRC Administrative Support), Bruce Emery (CC Director of Community Development), Brandon Sampson (Wet Dog Boats Rental Comp), Eric Lesch (Community Boating Program), Sasha Horst (Northwest Straits Commission staff), John Worthington (Sequim resident)

Welcome / Call to Order / Roll Call

Chair LaTrisha Suggs called the meeting to order at 5:32. Roll was called, and a quorum was present at the beginning of the meeting.

Approval of Minutes

Nancy Stephanz moved to approve the December 2024 CCMRC minutes; Alan Clark seconded. The motion passed unanimously.

Announcements

- *Strategic plan:* [2025-2029 strategic plan](#) is now posted to the MRC's website.
- *Recruitment:* There are several open positions available on the MRC, please share with any good candidates who may be interested.
- *Kelp kayak monitoring data review:* There is an end-of-season data review meeting with Northwest Straits Commission for the kelp monitoring project on January 30th. MRC members and kelp volunteers are welcome.
- *OPMA training:* MRC members who need OPMA training should attend the January 24th training at the County courthouse if possible. [Asynchronous online training](#) is another option.
- *Extra meeting:* February 24th, to allow the entire MRC to work together on project development.

Committee and Project Reports

Only project leads with substantive updates were asked to provide them.

- *Northwest Straits Commission – Alan Clark:* The Commission has been working on reauthorization, but it did not come to a vote yet despite Patty Murray's support. Reauthorization efforts will continue. The Commission has been working on a new definition of the Northwest Straits Initiative which it will soon vote on, which would move away from the "three-legged stool" model and clarify the Northwest Straits Foundation as a partner and a separate organization.

Introductions ~~Con't / Approval of Minutes~~

Additional participants on Zoom introduced themselves.

~~***Nancy Stephanz moved to approve the December 2024 CCMRC minutes; Alan Clark seconded. The motion passed unanimously.***~~

Committee and Project Reports – continued

- *Ediz Hook revegetation – Allyce Miller, Helle Andersen:* Date firmed for March 6th planting. Local 5th graders will plant in the morning, and volunteer slots are open for the afternoon (1-3pm). Please [sign up on Clallam Conservation District's website](#) if interested. This will likely be the last planting for this project, and dunegrass will be the main species along with some other native beach plants. The site has had some mortality, but is doing well overall thanks to dunegrass' hardiness. The overall planting site is about one acre.
- *Pinto abalone – Jeff Ward:* The final report for 2024 has been submitted. Initial plans for 2025 dives have been made, for 8 dives west of Port Angeles in September.
- *HAZWOPER / oiled wildlife training – Rebecca Mahan:* An 8 hour training is scheduled for April 15 and 16 at the Elwha Heritage Center, and a flyer will be shared as soon as the contract is confirmed. The second day will be wildlife-focused, hopefully in the field.

New or special business items

- *Roles and responsibilities:* Committee members reviewed the latest version of the roles and responsibilities draft document. All sections including Duties of the Chair, Duties of the Vice Chair, Duties of Project Leads / Co-Leads, Duties of Members, Duties of Alternates, and Duties of Northwest Straits Commission Representative were discussed and edited in real time. The Committee plans to bring this revised document to a vote for adoption at the next meeting, with a request for more info on one item (Vice chair item 4).
- *Project development for the next biennium:* A special meeting is set for February 24 as a work session to develop projects, which will have a hired facilitator. The Committee held a roundtable brainstorm of brief project ideas:
 - Derelict gear / crab pot removal (potentially with Blue ROV) (Helle / Rebecca / Allyce)
 - Blue ROV for other projects (Nancy)
 - Study tsunami impacts to the nearshore (Dann)
 - European green crab (LaTrisha / Chris B)
 - Keep current projects going (Lyn)
 - Education in new Marine Discovery Center in Port Angeles (partner opportunity) (Alan)
 - Potentially including pigeon guillemot exhibit already planned (Ed)
 - Eelgrass outreach, similar to Whatcom MRC's efforts at Wildcat Cove and Jefferson MRC's No Anchor Zones (Ann)
 - Kelp outreach similar to Snohomish MRC campaign re Edmonds kelp beds (Ann)
 - Trash removal from beaches (Allyce)
 - Monitor ocean acidification, potential partner with NWIFC (Allyce)
 - Remove noxious weeds at Hollywood Beach (Allyce)
 - Monitor Freshwater Bay water chemistry (adjunct to kelp monitoring) (Alan)
 - Shoreline armoring survey (similar to work by Island and San Juan Counties)
 - Address derelict pilings (LaTrisha)
 - Crab larvae study (Chris B)
 - Monitor ocean water quality, e.g. anoxic conditions (Dann)
 - Educational mural in downtown Port Angeles or Sequim (LaTrisha)
- *Presentation:* Alan mentioned he had been asked by the Yacht Club to present to them about the MRC, and suggested the MRC should have canned presentation elements ready for similar opportunities. *Amelia will share the existing presentation from the Studium Generale with Alan to adapt.

Discussion of next meeting date and agenda

- *Next meeting:* The meeting will take place on February 20th – note this meeting is moved from the usual schedule due to the Presidents' Day holiday. A special meeting (work session) will be held on the 24th for project development.
- *Call for new agenda items:* None at this time.

Public Comment

John Worthington from Sequim made a comment regarding the Olympia oyster restoration project, specifically its funding source, and concerns about transparency in the MRC's deliberation process.

Additional comments from Mr. Worthington, submitted as a letter prior to the meeting, are attached to these minutes.

Good of the Order

None at this time.

Adjourn

Chair LaTrisha Suggs adjourned the meeting at 7:12.

DRAFT



PUGET SOUND National Estuary Program



Washington Department of
FISH & WILDLIFE



Marine Vegetation Implementation Strategy Development

Clallam MRC Meeting
February 20, 2025

This project has been funded wholly or in part by the United States Environmental Protection Agency under assistance agreement PC-01J89501 through the Washington Department of Fish and Wildlife. The contents of this document do not necessarily reflect the views and policies of the Environmental Protection Agency or the Washington Department of Fish and Wildlife, nor does mention of trade names or commercial products constitute endorsement or recommendation for use.

Goals for this Discussion

- Provide an overview of the Marine Vegetation Implementation Strategy development process
- Gather high level input; what are the gaps in our early thinking?
- Flag specific opportunities for input and engagement



Washington State Dept. of Natural Resources
@waDNR

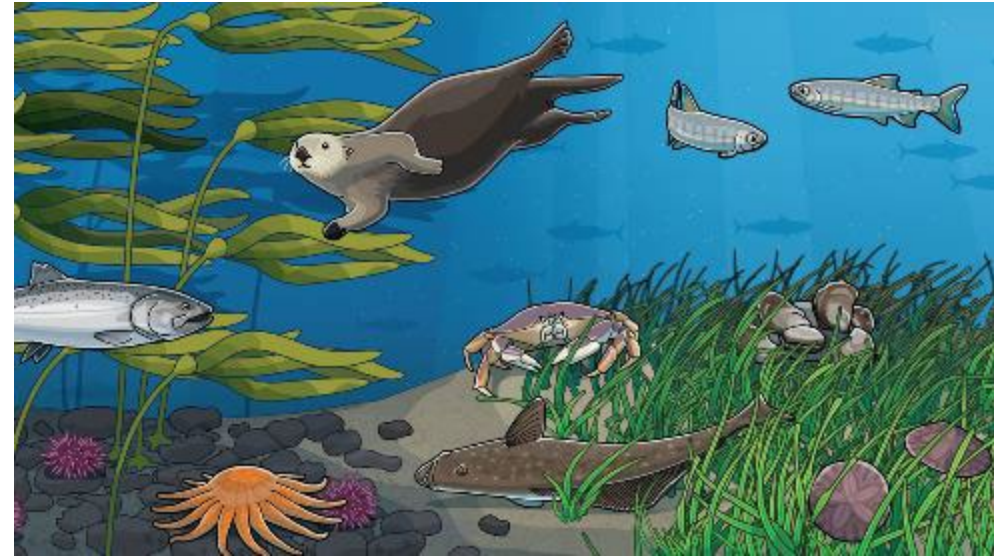
Turns out this was not what our marine ecologists meant by "promote our kelp and eelgrass engagement plan" :(



Why develop a Puget Sound Marine Vegetation Implementation Strategy?

Accelerate recovery and protection of kelp and eelgrass!

- Coalesce the priorities and needs from regional recovery plans into one comprehensive strategy
- Articulate priority approaches for recovery
- Identify and guide Puget Sound investments in kelp and eelgrass conservation and recovery – aligned and sustainable
- Increase opportunities within the National Estuary Program and recovery community





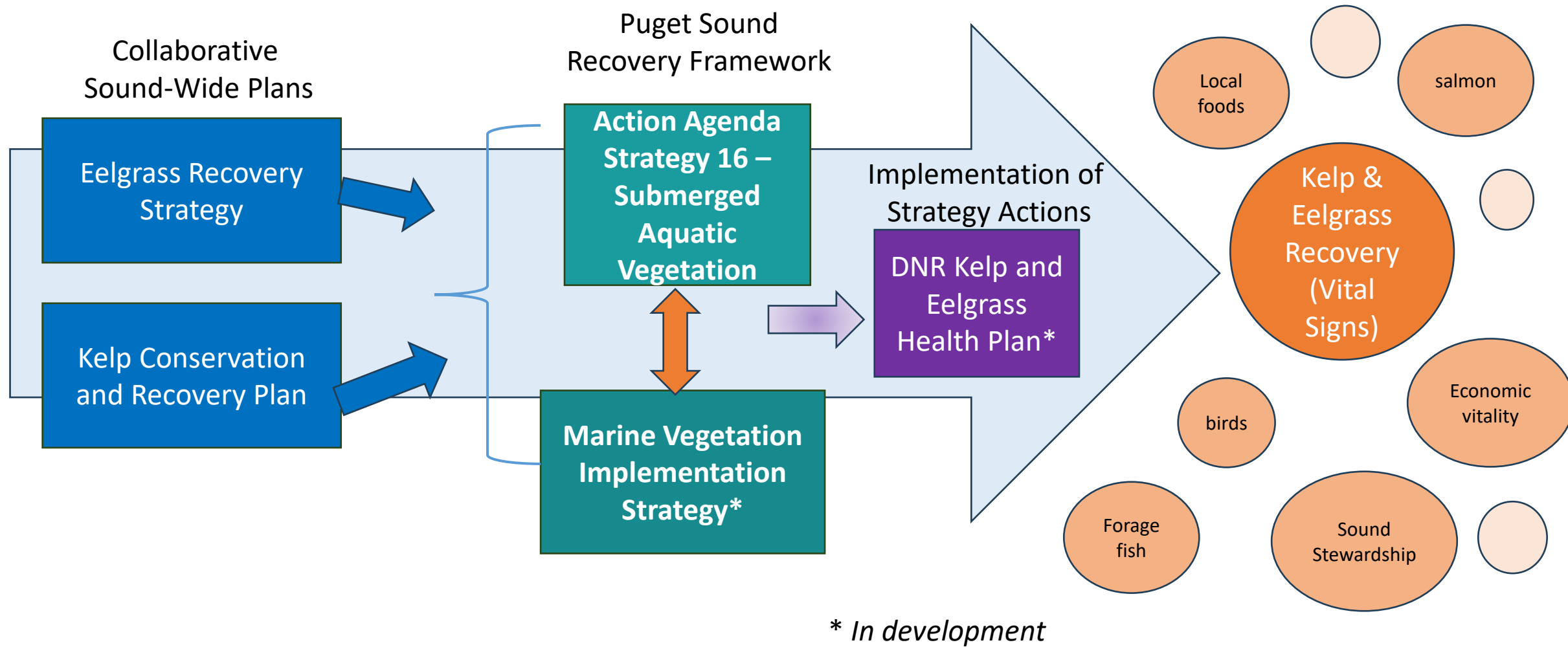
Strategy Development Approach & Timeline

Planning (May -
December 2024)

Content Development
(Jan - June 2025)

Finalize
Strategy/Reviews (July
– December 2025)

Kelp and eelgrass conservation & recovery planning





Proposed Strategies



1. **Research & Monitoring:** Implement targeted research initiatives to understand the factors driving changes in eelgrass and kelp, with consideration of their ecological and community benefits.
2. **Protection:** Fully implement and enforce available protections for kelp and eelgrass through existing regulations, programs, and policies.
3. **Restoration:** Accelerate recolonization and expansion of eelgrass and kelp at sites shown to possess suitable conditions using effective methods.
4. **Outreach & Education:** Target outreach and education to foster stewardship and collective action to benefit eelgrass and kelp conservation and recovery.



Other opportunities for engagement?



- Sign up for our email list to receive updates on the development over this year
- Upcoming workgroup and local meetings
 - We can come to you! Coffee hours, focused discussions with subset of members, joint meetings with other partners
- Provide comments to Feedback Form
- Review periods – including public comment



An underwater photograph of a kelp forest. In the foreground, several dark, leafy kelp fronds are visible, some curving upwards. The water is a deep, clear blue-green. In the background, a line of green trees and foliage is visible above the water's surface under a bright sky with some clouds.

Please reach out!

Habitat Strategic Initiative

- Marine Vegetation Lead, Bree Turner: Bree.Turner@dnr.wa.gov

STATEWIDE KELP FOREST AND EELGRASS MEADOW HEALTH AND CONSERVATION PLAN

*February 20, 2025
Clallam MRC*



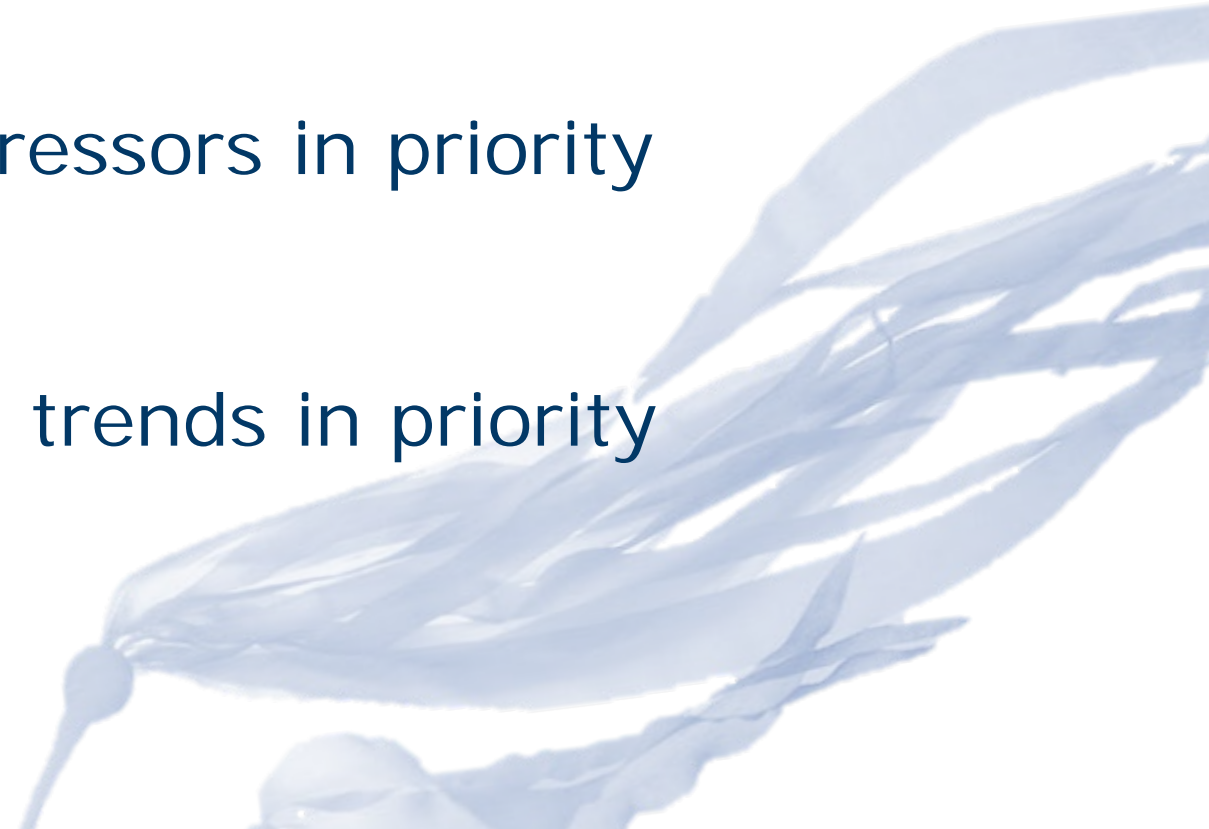
AGENDA

- Overview of statewide plan
- Overview of focus and engagement in the Strait
- Next steps



PRIMARY GOALS OF KELP AND EELGRASS PLAN

- ① **Protect and recover** at least 10,000 acres of priority native kelp and eelgrass habitat by 2040
- ② **Identify** and mitigate stressors in priority habitats
- ③ **Monitor** distribution and trends in priority habitats



TWO-STEP FRAMEWORK: BROAD SCALE AND LOCAL PRIORITIZATION

STEP 1: STATEWIDE HIGH VALUE AREA IDENTIFICATION



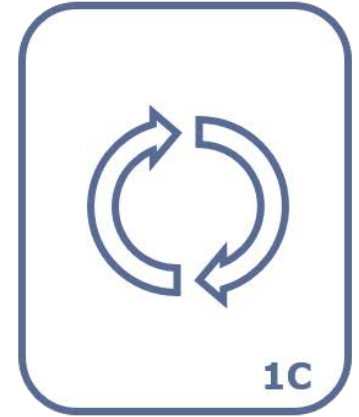
1A

SHARED VALUES



1B

HIGH VALUE AREAS



1C

REVISION

STEP 2: SUB-BASIN SCALE PRIORITY AREA IDENTIFICATION



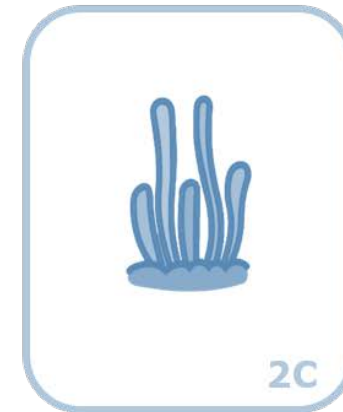
2A

LOCAL DATA



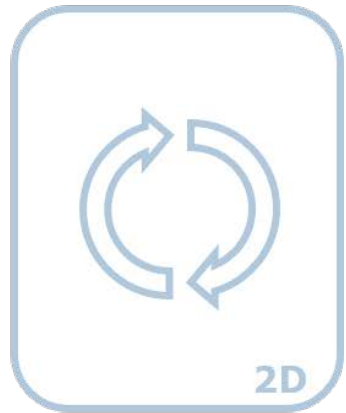
2B

SHARED ACTIONS



2C

PRIORITY AREAS

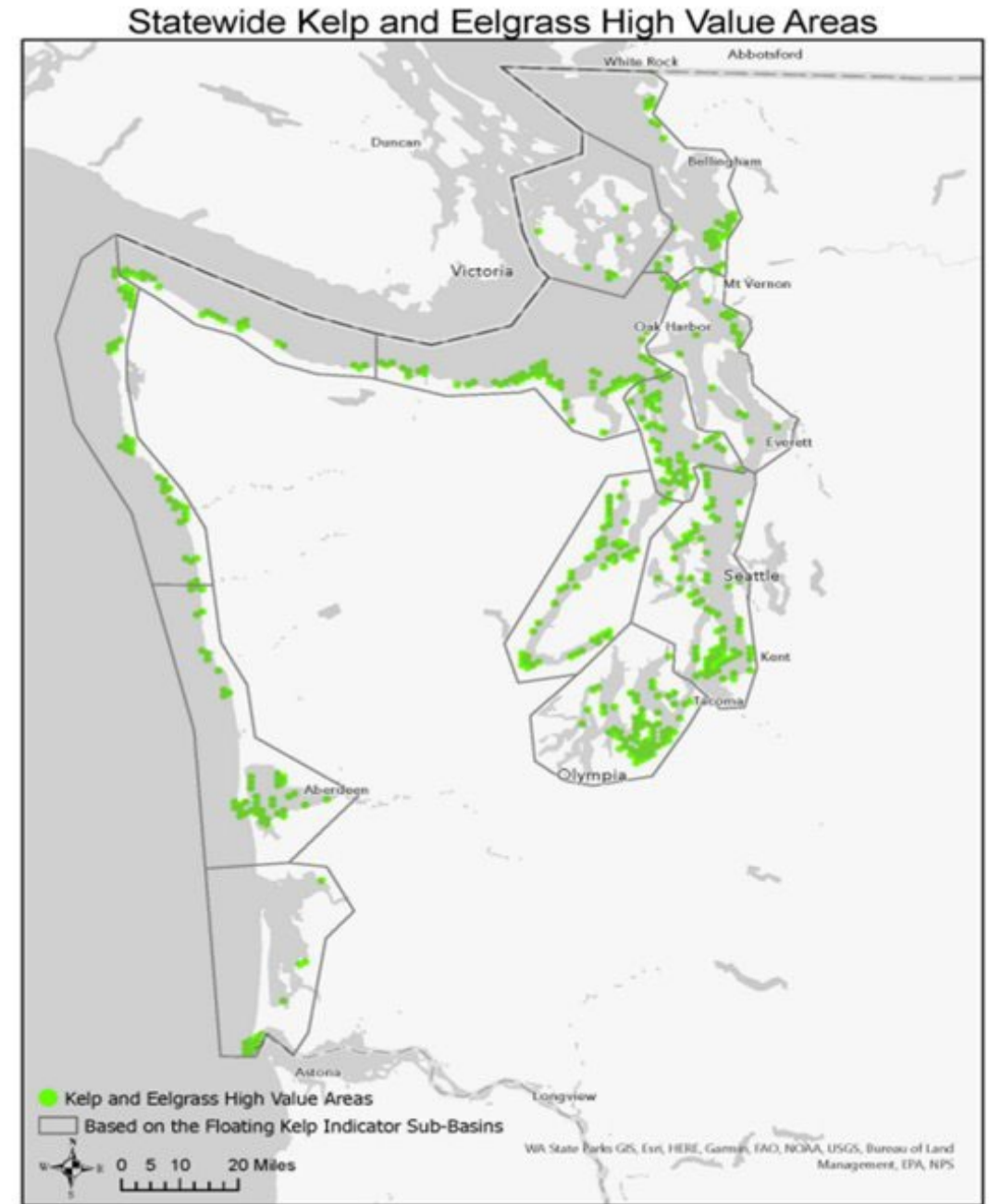


2D

REPEAT

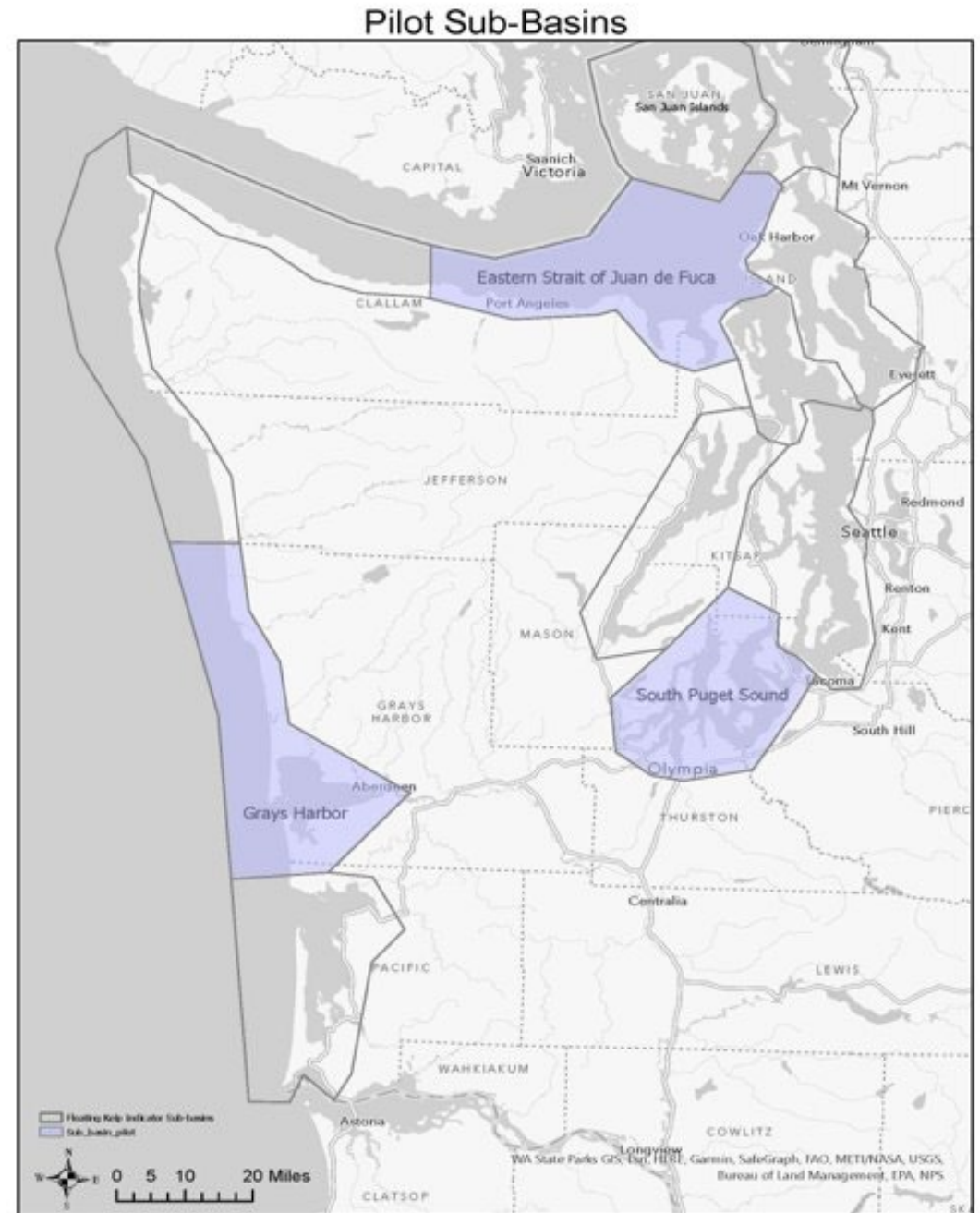
HIGH-VALUE AREAS: A STATE-WIDE FIRST STEP

- Maps ecological, economic, and cultural values
- Limited by data gaps and local context
- Will be iteratively refined through Plan

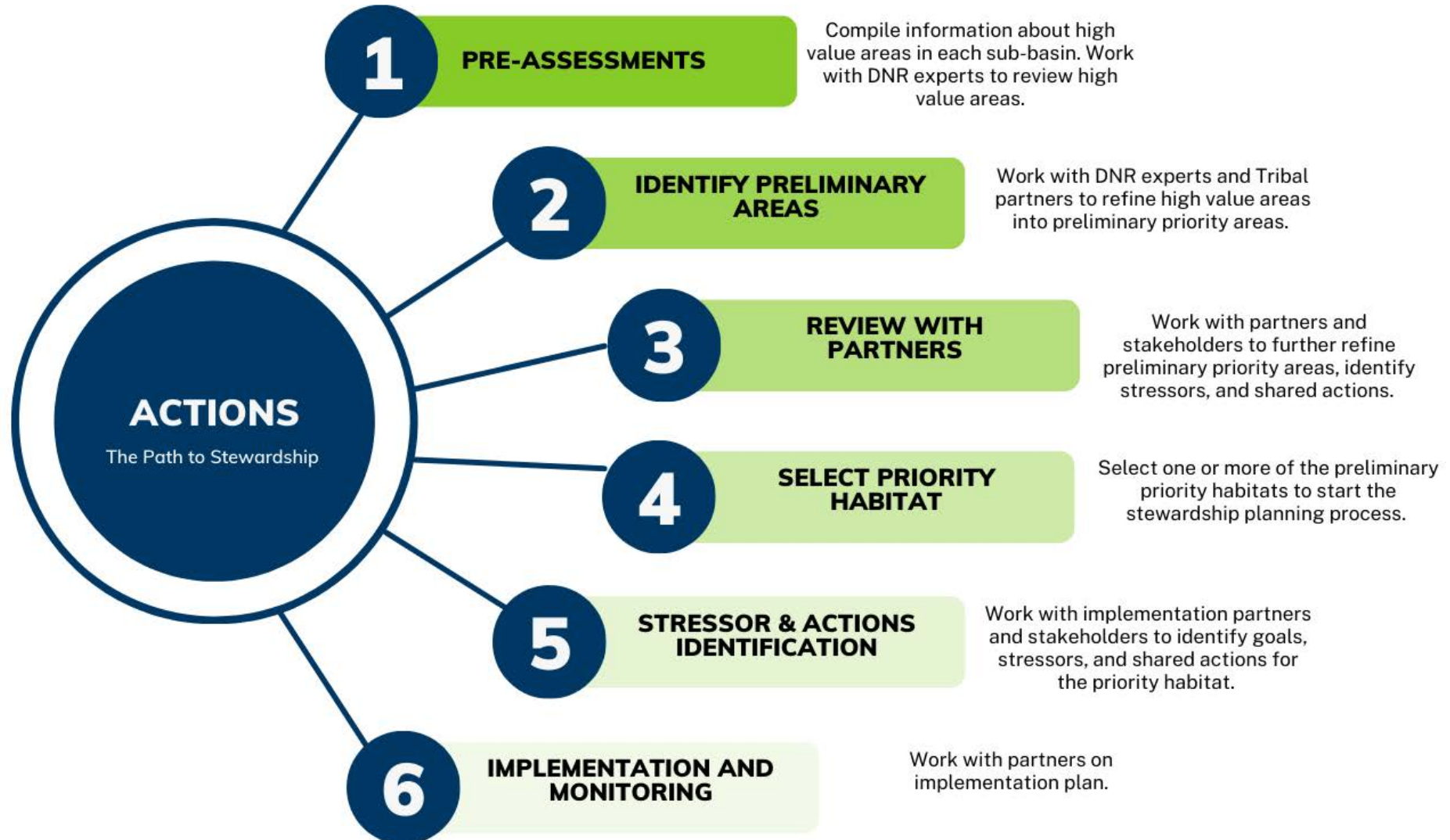


SUB-BASIN STRATEGY: PRIORITIZES LOCAL BOTTOM-UP PLANNING

- Priority habitat selected with extensive local input and data
- Action plans and goals to be developed with Tribes and partners
- Implementation reliant on partnerships and shared goals

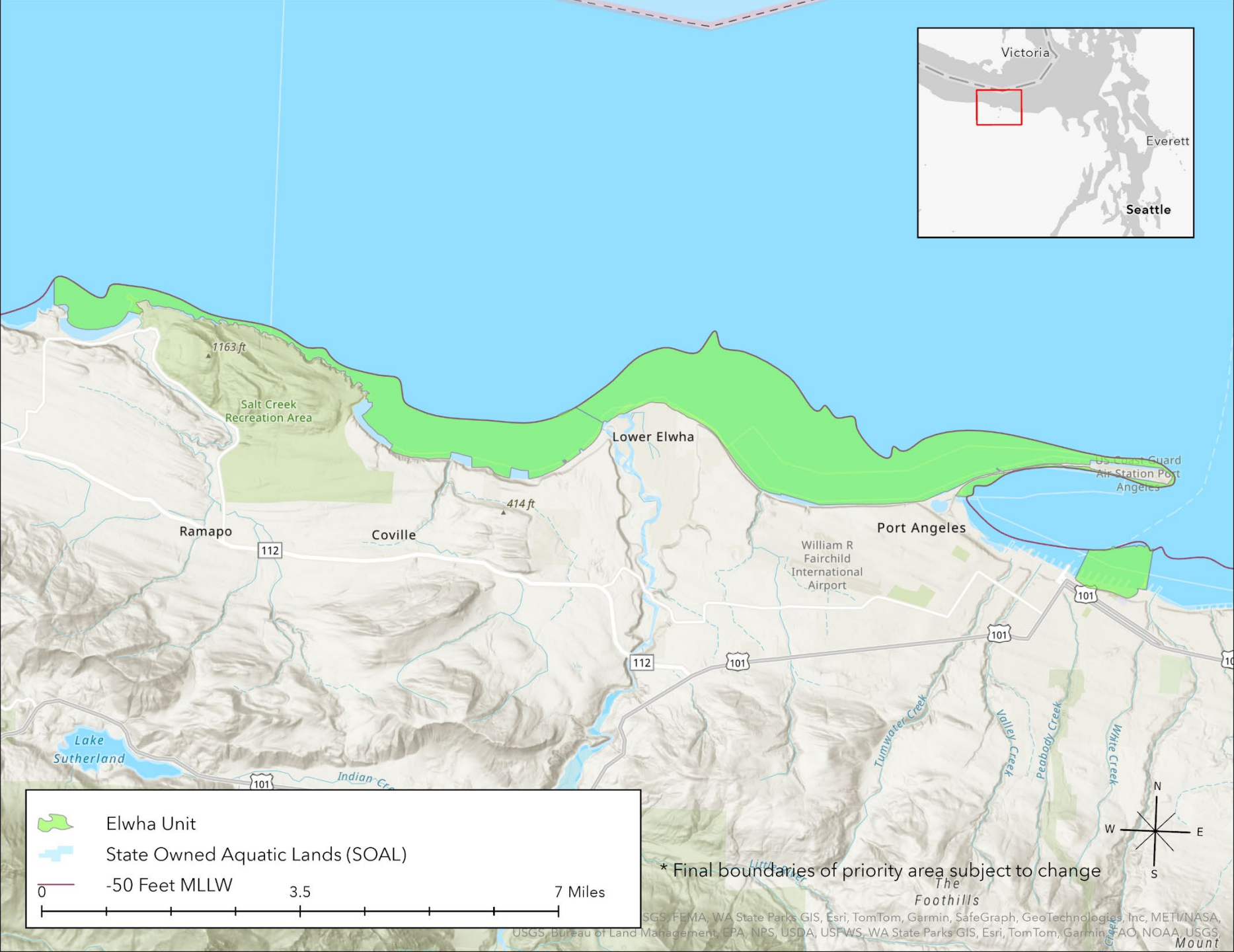


SUB-BASIN STRATEGY: PRIORITIZES LOCAL BOTTOM-UP PLANNING





ELWHA UNIT: Priority habitat for the Eastern Strait



Summary

- The Elwha priority area is a strong example of a **kelp and eelgrass habitat mosaic** along the nearshore
- Long-term data on distribution and trends show areas of **stability and areas of decline**
- Floating kelp near Elwha River mouth was impacted by the dam removal, but has recovered in surrounding area
- Nearby ANeMoNe station offers opportunity to **track climate change indicators** in the area
- Co-located research with **many partners** in the area



STEWARDSHIP PLANNING GOALS

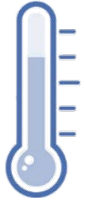
- **CONSERVE** healthy kelp and eelgrass
- **RECOVER** kelp and eelgrass habitat by mitigating stressors
- **RESTORE** kelp and eelgrass where feasible and appropriate

THROUGH



- Amplifying local **efforts**
- Increasing local **capacity**
- Integrating local **priorities**

STRESSORS OF KELP AND EELGRASS



PHYSICAL

- High temperatures
- Sediment
- Nutrients
- Currents and waves



BIOLOGICAL

- Animals that eat kelp and eelgrass
- Other seaweeds & invasive species that compete with or harm kelp and eelgrass
- Disease



HUMAN

- Point and non-point source of pollution
- Shoreline development
- Mooring & anchoring
- Harvest



CLIMATE CHANGE



EASTERN STRAIT STRESSORS WORKSHOP

October 2024 Elwha Unit workshop

- Gathered local Tribes, scientists, practitioners, and other interested parties in Port Angeles, WA
- Presented range of physical, biological, and human stressors, and each attendee voted on the most important
- Facilitated focused exercised and subsequent discussion regarding stressor mitigation



EASTERN STRAIT PRIORITY AREA: ELWHA UNIT

Most important stressors identified:

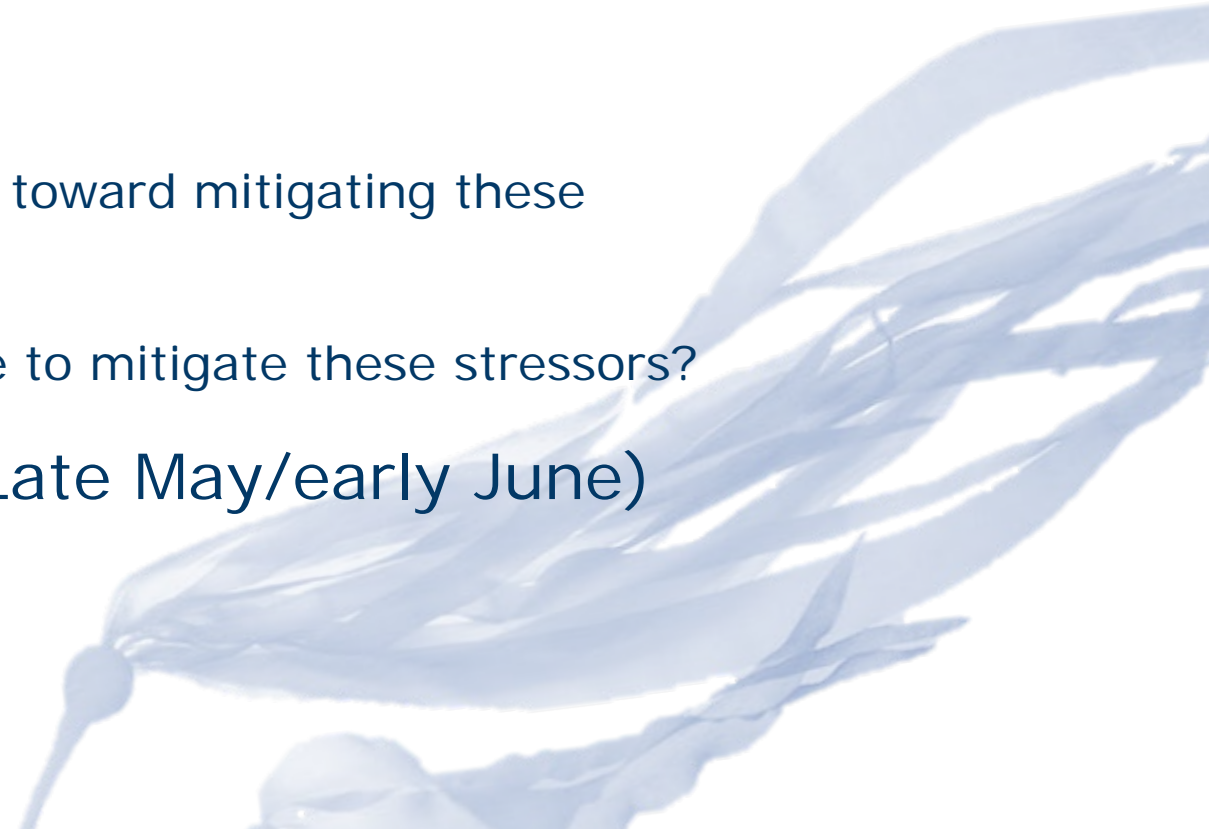
- Shoreline and upland development
- Temperature
- Substrate and benthic sedimentation
- Climate Change

Priority for action:

- Shoreline and upland development
- Temperature
- Nutrients
- Oil spills
- Sea level rise

Next Steps

- **Synthesize existing knowledge**
- **Workshop 1** (early April)
 - Review/add to current efforts in the area
 - Priority stressor mitigation -
 - How do the current efforts help us work toward mitigating these stressors?
 - What are the actions that we might take to mitigate these stressors?
- **Workshop 2 – Action Planning** (Late May/early June)



Questions

How would the MRC be interested in participating?

How can the organizations you represent participate or partner in this effort?

How can state agencies better support local kelp and eelgrass work?

CONTACTS

Cynthia Harbison

cynthia.harbison@dnr.wa.gov

dnr.wa.gov/kelp-and-eelgrass-plan



January 16, 2025

Marine Resources Committee
223 East 4th Street Suite 5
Port Angeles, WA 98362

Hello,

Attached is the best salmon restoration plan available to Clallam County decision makers.

The attached policy was developed by multiple expert agencies including the Army Corps of engineers.

No other salmon restoration plan makes sense, given that millions of dollars were already spent to develop and implement this plan and given its documented success.

The plan was to create a perfect system, and I firmly believe they did. I feel even stronger that every salmon river or creek should have this plan installed.

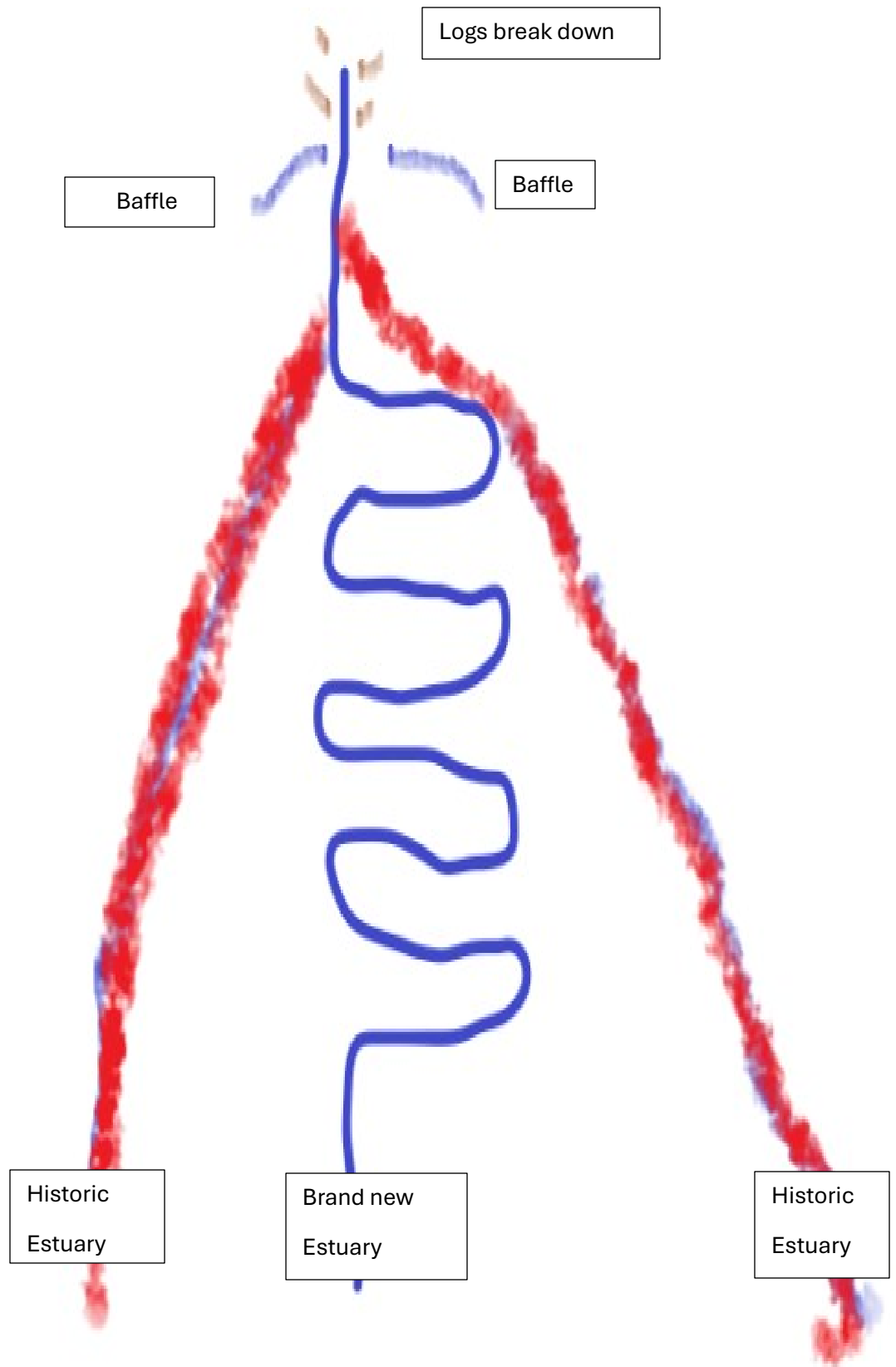
The plan was to allow log erosion at the top of the higher pitch and grade because that is where the stronger current and wind would bring them down naturally. The plan intended for the log to break down above the flat meandering part so the sediment could settle in the slower moving waters of the fixed meandering zone, where layers of composition could be ideal for laying eggs.

The channel would have baffles installed on both sides of the rivers or creek to ensure fine particles would make up the spawning area and so sediment did not build up to split the river or creek to create unwanted riffles. Logs were kept out of the meandering zone to prevent channel migration, washout and bed scour. The salmon hotel theory was viewed as hazardous.

I am formally asking the MRC, to respond to this letter. Please explain why this salmon restoration plan should not be installed.

Thanks.

John Worthington
425-919-3910



DRAFT letter for discussion re proposed hard armoring, etc. – **For MRC use only**

Date: _____, 2025

To: Clallam County Board of Commissioners
Clallam County Department of Community Development
Clallam County Planning Commission
Clallam County Public Works Department
Clallam County Hearings Examiner

From: Clallam County Marine Resources Committee (MRC)

Subj: Shoreline management at Three Crabs Road

For many years the MRC has supported educational efforts regarding responsible stewardship of marine shoreline habitat for county landowners as well as permitting staff through workshops, field trips and webinars. In particular, we have advocated for the “Shore Friendly” program of the Northwest Straits Foundation which offers consultation, site visits, and potentially sources of funding to assist with revegetation and soft armoring techniques of property protection.

Despite these efforts and resources, it has come to our attention that there are actions proposed and permits under consideration by the County that deeply concern the MRC.

- To summarize our concerns: Three Crabs Road is on a stretch of beach between the Strait of Juan de Fuca and an estuary connected with the water table that extends between Meadowbrook Creek and Cooper Creek. Like all such landforms, it is a dynamic environment – and always has been, as seen in photos from a century ago:
 - [insert historic pic showing flooding]
- Sea level rise and increasing intensity of storms are two of the expected impacts of global warming and can already be measured in many areas. The northeast-facing coastline between Meadowbrook and Gierin creeks is vulnerable to storm surges coming from the east, and especially when they coincide with high, “King” tides. Residents of this shoreline have experienced more erosion in recent years, probably a result of the combined effect of more-intense storms and higher-elevation King tides. Their photos (and those from others) illustrate the increasing frequency of flooding at Three Crabs Road:
 - [insert recent pic showing flooding]
- Maintenance of the safety and environmental protection of this dynamic and fragile shoreline lies with permitting agencies ranging from the federal US ACOE and the state WDFW, DNR and Ecology, to the local: Clallam County, ideally in co-management with local tribes. Among these it’s often the local entities that are the most knowledgeable about a specific location, area, or property – or could most easily obtain new information. This is particularly true for environmental and habitat features, for development permits and proposals for structures (including septic systems), and for perspective on potential impacts on neighboring properties.

- The environmental functions of dynamic shorelines are many; protection of these functions often protects infrastructure as well. For example:
 - Wave action dissipation is a natural function that prevents vertical scouring and nearshore habitat function loss – one problem caused by bulkheads.
 - Drift cell maintenance is a normal/natural function that supplies sediment to neighboring beaches and Dungeness Spit.
 - Niche habitats found in nearshore beaches are used by species specifically adapted to the terrestrial-aquatic interface and nowhere else.
- Local governments also have the highest responsibility for adapting permitting to local conditions – through conditioning the permit, mitigating impacts, or denying a permit – and not assuming that state and federal agencies know best.
- Given that sea level is rising, an OHWM from the past used to establish setbacks isn't where it would be set today, and today's mark wouldn't be appropriate tomorrow or next year. We can't outrun it with more frequent measurements; instead, a conservative, forward-looking mitigative approach is warranted.
- Our current SMP and Comp Plan – and/or associated codes – may not be as protective as they should be since the measure and timing of impacts of climate change haven't been predictable precisely – and never will be. Yet the County is still responsible for making permitting decisions that conservatively protect both landowners and County taxpayers from risk and liability.
- Indeed, the impacts of sea level rise and more threatening storms have been known to be imminent since before the prior SMP, and the following is included in current County codes, policies, and/or plans:
 - Shoreline Residential-Intensive designations should include moderate to high density while “ensuring infill and new development occur in a manner that avoids and minimizes adverse impacts on shoreline functions”. (SMP)
 - “This Program [the SMP] should be implemented in a manner that achieves no net loss of shoreline ecological functions” and when considering new projects that could result in loss of ecological function, the County must take into account the effects of the project on downdrift resources (e.g. neighbors as well as habitat), (Ch 35.40.020)
 - “The cumulative effects that development would have when added to other past, present, and reasonably foreseeable future development”. (Ch 35.40.020)
 - “The Administrator shall prohibit any use or development that will result in unmitigated cumulative impacts”. (Chapter 35.40.030(6))
- Finally, at this time there are multiple actions and requests for actions from landowners along Three Crabs Road affected by the now-regular occurrence of flooding associated with storm surge and King tides. These actions apparently propose using traditional engineering methods that prioritize protection of limited private properties, including hard armoring and raising the elevation of the road surface.
 - First, this is not surprising. It would be very upsetting and frightening to see waves eroding one's property. Damage to one's landscaping and septic system would also be disturbing. If one had the financial means to construct better protection, they would understandably be motivated to do something as soon as possible. If one did

not have the means to hire consultants and contractors it would be that much more frightening.

- The temporary closure of one's only access road would also be upsetting; however, high tide waters subside at least partially within hours. It is also possible that emergency ingress or egress would not be affected.

MRC advisory messages:

- It is also upsetting and frightening for thousands of taxpayers to observe the destruction of the fragile environment for the expensive and temporary relief of landowners living on a dynamic shoreline. Any "solution" would be temporary since sea level rise and storm surge are on a worsening trajectory. We submit that traditional engineering will not fully protect residents from re-occurrences and that a long-term strategy to address the issues along Three Crabs Road is warranted – as soon as possible.
 - In fact, some of the current applications for bulkhead replacement or rehabilitation are for bulkheads permitted relatively recently.
- SEPA is designed to consider cumulative impacts, and hard armoring a segment of dynamic shoreline is known to cause erosion and destruction of adjacent properties almost immediately. SEPA decisions should consider neighboring properties and cumulative/long-term effects. Mitigation of impacts should start with considering avoidance. In the case of roads and homes along Three Crabs Road that means retreat or removal.
- Again, historic engineering methods like hard armoring won't resolve the new issue of indefinite, rapid erosion in the long term. What are alternatives to hard armoring? It is worth checking with state agencies for housing, infrastructure, and habitat restoration grant opportunities to help landowners with retreat, removal, or raising structures out of harm's way. This is a problem faced by every county with marine shorelines, so other collaborations may be available. Also, house insurers may start requiring landowners to take such steps and could be a source of practical advice.
 - Even though armoring of any type is considered a temporary fix for many beachfront structures, soft armoring can be less expensive to build and maintain and is much less destructive (potentially restorative) to fragile habitat.
- Also, armoring the marine shoreline won't address or resolve property flooding coming from two directions resulting from a higher sea level, estuary elevation, and/or water table during high tides.
 - Regarding regular inundation of septic systems, a regional sewer line may be needed due to the risk to human and environmental health from potential release of pathogens. Water quality grants and loans are likely available to assist that work.
- Note that retreat is not without precedent. Landowners on Rivers End Road (west side of the Dungeness River mouth) were bought out and/or structures were raised or removed. This was accomplished to benefit the shoreline habitat of the River and remove the risk to taxpayers of compensating private property owners for repeated flood damage.
- The shoreline landscape is changing as fast as development proposals are coming in. In 20 years our shorelines could look closer to the tsunami inundation maps than they do now.

- Bottom line: Band-aids including hard armoring and raising roads won't permanently solve the problems of increasing erosion and inundation and are more likely to cause new problems with both habitat and infrastructure.

This memo is primarily concerning activities we have noted in the Three Crabs Road area; however, the information is pertinent to marine shorelines throughout Clallam County. The vulnerability and fragility of beach and nearshore habitats is most recognizable but bluff shorelines are vulnerable as well due to erosion and risk to structures above.

Clallam County MRC is committed to promoting awareness of shoreline habitat functions and values and alternatives to hard armoring. Indeed, we are hosting a "Shore Friendly" training for county staff this spring, made available by the Northwest Straits Foundation – one of our state-level partners. Please reach us via our County staff coordinators:

Cathy Lear

Amelia Kalagher

Rebecca Mahan

January 17, 2025

Marine Resources Committee
223 East 4th Street Suite 5
Port Angeles, WA 98362

PROPOSED DUNGENESS SALMON RESTORATION PLAN

Hello,

Based upon the previous federal ,state and local experts findings and reports from 1970,1991 and 2003, I suggest the following plan for the Dungeness River Valley. I have attached a crude drawing to illustrate the initial proposal.

The proposal is a deluxe version of the 2003 model created and endorsed by the United States Army Corps of Engineers. All log fells and decay will happen above the fixed meandering zone. The Dungeness fixed meandering zone would most likely be two or even three times as long as the 2003 model. The Meandering zone would be kept clear just like the 2003 model.

The baffles will be different in that there will be a lot more of them and larger in project size in order to add chlorine dioxide treatment and windmill pump mechanisms. Large enough to store water into smaller flood insurance friendly amounts, waiting to be pumped up stream after treatment. This system will ensure recycled water in the reservoir has been cleaned so as not to contaminate fresh water.

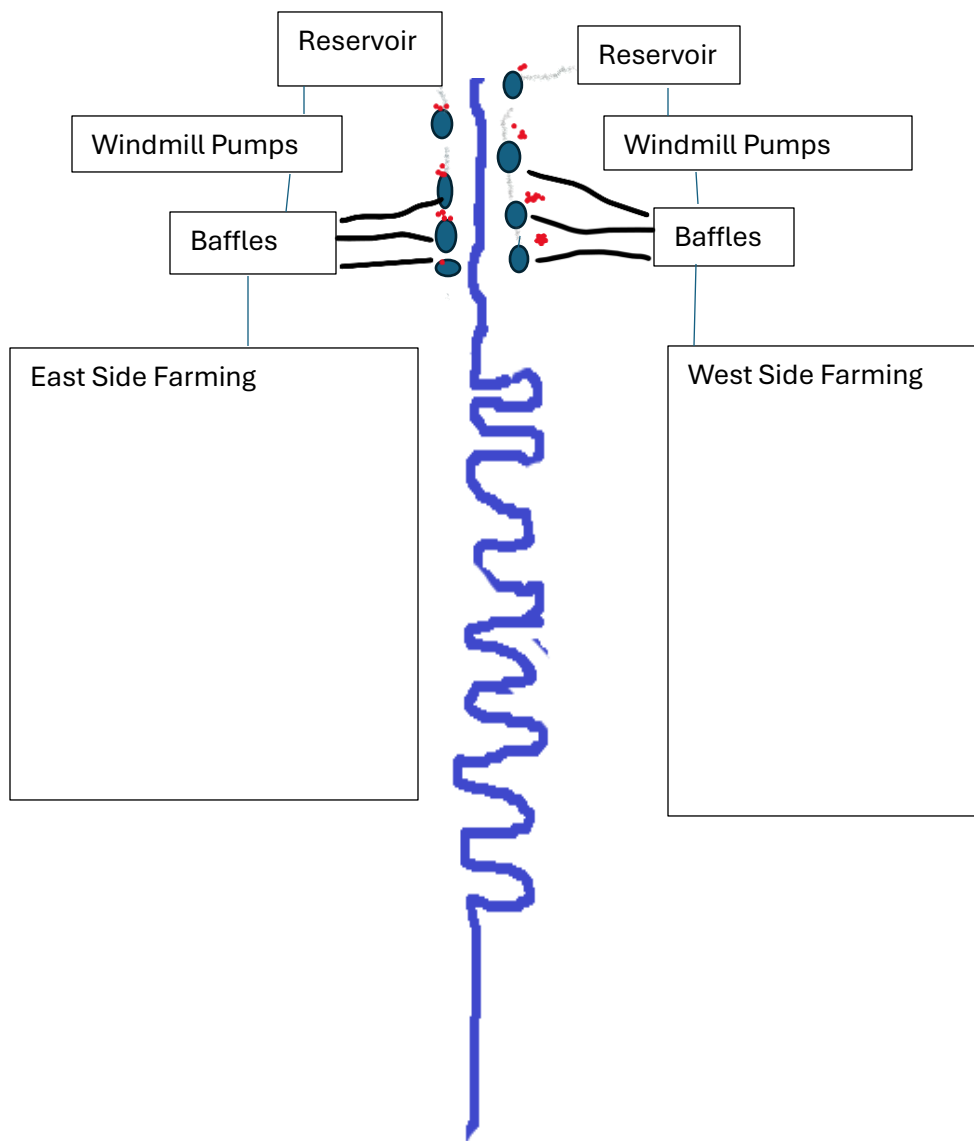
The farming area would be the catch basin for both treated water and floodwater. A separate farming area on both sides would keep valuable mineral soil available for rotation farming. I am not buying the no-till system.

This plan would maximise salmon spawning and increase farming potential pending more baffle and windmill operations.

Please give this plan consideration.

Thanks

John Worthington





January 24, 2025

Dear Mr. Worthington,

Thank you for your letter of January 16 describing a salmon restoration plan.

The Clallam Marine Resources Committee does not address salmon restoration in fresh water. The CMRC is focused on the marine environment, undertaking such projects as monitoring kelp, sea birds, and pinto abalone. The MRC strives to use best available science in its projects.

Your restoration plan may be better addressed to a salmon restoration organization.

Thank you

Ann Soule

Ann Soule
Vice Chair
Clallam Marine Resources Committee

January 17, 2025

Marine Resources Committee

223 East 4th Street Suite 5

Port Angeles, WA 98362

FISH CULVERT OR NEW STORMWATER DRAIN?

Hello,

This review is based upon expert studies from the 1970's, 1990's and 2003 and from the language in the court arguments in the fish culvert case. Based on those previously released science from the 1970, 1990's and 2003, the fish culverts were only helpful in providing access to flat meandering zones.

It is a fact that those reports concluded that access to areas with a topography grade of over 3 percent, were too steep and channeled and created undesirable water flow CFS and severely scoured any salmon beds located in those areas.

In the fish culvert case, the argument was that culverts were needed to provide access to "spawning grounds." Stating "Most of the spawning occurs on the other side of the culvert." However, that is not always the case.

One can clearly see that many of the culverts that have been installed, (Chick Coop Creek for example) have been installed in steep graded areas, that offer limited salmon spawning, based on their own previous conclusions. The creek goes up an obvious hilly terrain where the grade and CFS would scour away most of any spawning activity that took place there. Those types of culverts are obviously not leading to preferred salmon spawning locations. They are just new stormwater drains.

If the engineered Jimmycomelately model was applied to Chickcoop Creek, it would have come down just west of where the north campus is located. (The McGlothlin farm/ Long house.)

In short, they diverted the meandering of Chicken Coop to the steepest eastern portion around the north campus. That has restricted the spawning grounds of Chick Coop Creek to

the estuary out in front of the north campus. In other words, the Chicken Coop Creek culvert does not create access to a preferred spawning location, it just provides access to a suicidal spawning ground. Sure, it restored habitat, but only an undesirable one.

The salmon culvert process needs serious review and oversight.

Thanks.

John Worthington

January 18, 2025

Marine Resources Committee

223 East 4th Street Suite 5

Port Angeles, WA 98362

DUNGENESS FARMING RESTORATION

Hello,

This proposal is a potential addition to the proposed Dungeness Salmon Restoration plan.

Whereas the nautical miles, air miles and truck lane miles for agriculture are not tracked,

And

Whereas the sulfur emissions from bunker fuel emissions and diesel fuel emissions are at harmful and unacceptable levels,

And,

Whereas the loss of minerals from American food sources has helped create a health epidemic, by relying on nitrogen and potassium, or other chemicals.

And

Whereas international plots and schemes are attempting to convert farming space into open space and sowing racial divides,

And

Whereas there is a new administration coming with a new focus on healthy food sources,

And

Whereas historic restoration is too unreliable and federal grants for historic restoration ended up being used for natural restoration,

And

Whereas natural restoration is better than historic restoration or salmon hatchery facilities,

And

Whereas property protection rights have not been extended equally,

And

Whereas 75 percent of leafy greens are grown and shipped from over 1500 miles away,

And

Whereas over 70 percent of leafy greens can be grown in a northwest climate,

And

Whereas Congress is needed to regulate commerce and impose nautical mile taxes, air mile taxes, and lane mile taxes on goods from out of state and out of country sources,

Clallam County and the Jamestown S'Klallam Tribe find that farming in the Dungeness Valley shall be restored and optimized.

A partnership will be formed to fund and build an organic farming system that uses minerals from river water and other organic means other than nitrogen and potassium chemical sources.

The proceeds for the project will be split equally between the federal government, Clallam County and the Jamestown S'Klallam Tribe. The USDA, WSDA, and Jamestown S'Klallam Tribe will regulate the facility. Disputes will be settled by initiatives or referendums.

The facility will be two open field sections with mobile greenhouses relocated to a rotating flood zone where minerals have been stored over time. One operation on each side of the Dungeness River.

The baffle and windmill mechanisms will treat and process farm runoff and pumped into reservoirs for repeated use.

Facilities will be leased to farmers.

Congress will have to pass nautical mile tax, air mile taxes and assess user and impact fees to prevent price under cutting.

Please consider this proposal.

Thanks

John Worthington

Project: Launch Advisory Capacity

Project Plan

Goal: The goal of this project is to facilitate MRC member engagement with planning, permitting and other governmental processes related to shoreline/nearshore/marine development.

Participants: MRC leadership, members, staff; temporary consultant(s)

Activities:

- Establish MRC co-leads and other interested members on a new subcommittee
- Clarify roles and expectations between MRC staff and subcommittee
- Hire temporary consultant (land use planning specialist)
 - Training(s) on permitting processes (must be kept basic) – perhaps consult with Island or San Juan MRC for tips
 - Training on use of adopted Clallam MRC protocol for advisory work
 - Assess usefulness of “white paper” approach to expressing concerns (assume “Concerns list for BOCC” is adopted soon)
 - Consider whether/when MRC wants to be a “technical resource” to permitting staff
 - Interviews or other activities that introduce MRC subcommittee members with regulatory entities from County, Ecology and elsewhere (and vice versa)
 - Determine where/when in permitting process the MRC should engage
 - Shadow/support MRC subcommittee in at least one pilot that includes review and comment on a development proposal

Outputs:

- Online workspace for advisory work
 - Protocol checklists
 - Templates for comment letters, narratives for public speaking
 - Template for “white paper”
 - Template for annual report/ slideshow to BOCC
 - Folders for development activities being studied
- Current directory of appropriate point persons (planners and biologists) and boards from local, state, fed, tribal agencies/entities that work directly on proposals planned in Clallam County, including County DCD, PW, and EH and others
- Established liaison/point person from MRC for these entities

Outcomes:

- Connections with planning and permitting staffs
- Connections with BOCC and other policy makers
- Clarity of the role and capabilities of a new MRC subcommittee and other members in fulfilling our advisory responsibilities

- Clarity of the overlap with educational work

Resources Required

Estimated time commitment for participants:

- **MRC project lead and co-lead:** 6-8 hours per month each
- **MRC subcommittee volunteers:** 2-4 hours per month
- **MRC staff:** 15 hours/month first year, 10/month second year (contracting, invoicing, meeting logistics)
- **Consultant:** 50-75 hours total

Estimated contract cost: \$10,000

Questions & Comments

1. Highly dependent on committed lead and co-lead
2. Very closely tied with MRC staff and operations
3. Adds a new “project” that staff and all members will need to track more closely than they do for field projects
4. Contactor must be familiar with regulatory processes, agencies and personnel on the NOP
5. This project does not require a QAPP
6. Current concerns in the process: specific wording causing delays in process, MRC being consulted after decisions are made

Project: Nearshore Restoration at Co-managed Wildlife Refuges

Project Plan

Goal: Restore nearshore habitat at the Jamestown S’Klallam Tribe’s co-managed Dungeness and Protection Island National Wildlife Refuges

Participants: MRC members, MRC staff, Jamestown S’Klallam Tribe (JST) refuge staff

Activities: Remove over 10 acres of invasive vegetation, nearshore restoration plantings; monitor; report

Year 1 – Organize volunteer crews to participate in hand pulling and/or mechanical removal of invasive Dalmatian toadflax and non-native grasses from sand spits and salt marsh habitat on National Wildlife Refuges

Year 2 – Continue removal efforts in late spring. Plant with native species.

Outputs: Removal of invasive vegetation, native vegetation plantings

Outcomes: The removal of non-native invasive vegetation will reduce competition with native species, enhance nearshore habitat quality and availability, and strengthen ecosystem structure and function. These restoration efforts will improve the ecological resilience of the co-managed National Wildlife Refuges, supporting long-term habitat health. Additionally, the project will foster community engagement by providing volunteer opportunities that connect people to conservation efforts and promote stewardship of these vital ecosystems.

Resources Required

Estimated time commitment for MRC volunteers: 5 days to participate in invasive vegetation removal efforts and 2 days to participate in plantings

Estimated time for partners: 40 hours

Estimated time commitment for MRC staff: 10 hours?

Jamestown S’Klallam Tribe staff: 80 hours

Estimated cost: \$15,000

Commented [GU1]: Includes cost of plants? Need to contract through county for plants

Questions & Comments

- The project areas—Graveyard Spit on the Dungeness National Wildlife Refuge and Violet Spit on Protection Island Wildlife Refuge—serve as critical habitat for marine mammals, seabirds, and shorebirds.
- Invasive vegetation, such as Dalmatian toadflax (a Washington State Class B Noxious Weed) and non-native grasses, can restrict wildlife mobility and reduce available foraging areas.
- To protect these sensitive habitats, removal efforts will focus on hand-pulling and mechanical methods like digging, ensuring minimal disturbance to native species. Biological control methods will not be used.
- The project will engage existing volunteers from the Dungeness and Protection Island Refuge Management Program, fostering hands-on stewardship and strengthening community involvement in conservation efforts.

Project: European Green Crab Control

Project Plan

Goal: Control and aim to eliminate invasive European green crab (EGC) from Dungeness Spit Wildlife Refuge and other locations (as needed) in Clallam County.

Participants: MRC members, MRC staff, Jamestown S’Klallam Tribe (JST) refuge staff

Activities: JST refuge staff will lead a volunteer effort to trap and remove EGC; report

Commented [GU1]: Pass through concern

Outputs: Trapping and removal of EGC in known location on Dungeness Spit

Outcomes: Control or elimination of the EGC population on Dungeness Spit

Resources Required

Estimated time commitment for MRC volunteers: depending on recruitment and participation of volunteers 7hrs/day 28hrs/ week 10 weeks- 280 hrs???

Estimated time for partners: 40 hrs/week at \$1200/week for up to 20 weeks

Estimated time commitment for MRC staff: 20 hours

Estimated cost: \$24,000

Questions & Comments

- Cost variable depending on how much time we want to pay for a Biological Technician to supervise volunteers.
- Volunteers would have to go through training (including safety) by Tribe. Volunteers would likely be scheduled through existing volunteer program at the River Center and Refuge but could count as hours for MRC (?)
- If other areas are found to have EGC may be room for trained volunteers to help there.

Potential partners: City of PA Recreation Department (contact: Tim Tucker)

Submitted by Allyce Miller, representing Lower Elwha Klallam Tribe

The recreation department of the city wants to remove a lot of the concrete, asphalt, metal, and trash pieces that are littering the shoreline of Ediz Hook. You can see the attached picture to get an idea. These pieces are falling out of the shoreline as it erodes, and many pieces are already exposed. The city will supply the heavy equipment and operators to remove the big pieces. We thought the MRC could get involved by:

- 1) Funding the disposal of the concrete and asphalt at local disposal (~\$10k)
- 2) Organizing a volunteer event to pick up smaller pieces of asphalt and concrete (\$0)
- 3) Planting any heavy equipment access scars with native beach plants (~\$1k)

This budget needs to be refined as we figure out what cultural compliance is needed and how much there is to be disposed. This \$11k is a rough estimate for now. There's always the option of looking for other funding sources if significant cultural compliance or there is a lot to dispose of.

[Tim Tucker] also shared some long-term goals of taking out some asphalted parking and condensing parking options a bit more by the rowing club because that parking area asphalt is fast-eroding into the strait. That part still needs time and planning, so it's not ready to bring forth into the project proposal now, but FYI it is something to look forward to down the line if MRC wants to play a role.

Commented [GU1]: Pass through flag

Commented [GU2]: Likely go through Clallam Conservation District for this. Some dollars maybe needed for incidentals



Project: Elwha River Stewardship

Project Plan

Goal: To protect and improve water quality, contribute to nearshore habitat and species protection, and encourage community stewardship.

Participants: MRC members, MRC staff (Surfriders are affiliated with this project as they are paying for a second Sanikan in the parking lot).

Activities: Maintaining the dog waste station refilling dogi bags twice a month. Counting cars in the parking lot to estimate number of 2024-25 visitors. Paying Bill Plumbing for maintaining the Sanikan on the dike.

Outputs: Contract with Bill Plumbing; Purchase and distribute more than 5,200 dogi bags per year; Weekly maintenance of a well-used Sanikan (per Bill's Plumbing).

Outcomes: Provide sanitary facilities for more than 50,000 people and 9,700 dogs based on 2023-24; In addition, hundreds of students use the beach as an outdoor classroom (not part of the visitation estimate).

Resources Required

Estimated time commitment for MRC volunteers: 2-3 hours per month or 24-36 hours per year to maintain the dog waste station based on driving distance from Port Angeles. 20 hours to write the annual project report. Total 44-56 hours per year.

Estimated time for partners: don't know Surfriders time commitment.

Estimated time commitment for MRC staff: 5-10 hours? Ensuring the continuation of the contract with Bill Plumbing; Checking annual project report written by the lead.

Estimated cost: \$3,200 annually – total \$6,400

Questions & Comments

- Do we want to find a cost sharing partner? (based on a question raised during the project discussion in 2023).

Commented [GU1]: Surfriders does other work in this area but is not a sponsor of MRC's work

Commented [GU2]: This project needs Science Advisory input, and follow up to be sure that protocol is followed and working out. Co-lead could assist.

Project: Kelp + Eelgrass Display at MDC (Marine Disco Center / new Feiro)

Project Plan

Goal: The goal of this project is to enhance connections with the new Marine Discovery Center through adoption of educational displays specifically on kelp and eelgrass and local occurrences/trends. Project would also describe Clallam MRC and Northwest Straits Commission efforts to monitor, survey, and restore (future) eelgrass and kelp along the Strait of Juan de Fuca.

Participants: MRC project lead and co-lead; MRC staff; Feiro staff, board, and interior/display design consultant

Activities:

- Float idea with Feiro staff, board
- Firm up connections with appropriate Feiro/MDC personnel and contractors
- Work with designers on content
- Support as needed
- Pay for display

Outputs:

- Attractive educational display (possibly interactive) installed (and/or portable?) at the new MDC

Outcomes:

- Improved understanding by all viewers of the display regarding what's important about marine vegetation and algae
- Improved relationship between MRC and Feiro/MDC

Resources Required

Estimated time commitment for participants:

- **MRC project lead:** 10 hours
- **MRC project co-lead:** 5 hours
- **MRC staff:** 5 hours

Estimated contract cost: \$10,000 (?)

Commented [GU1]: Timeline in flux, as funding is still in progress

Commented [GU2R1]: This project could be included in "education and outreach" bucket, and if timeline doesn't work out another display could be substituted. Confirm with Melissa @ Feiro

Questions & Comments

1. Requires agreement and collaboration with MDC project personnel
2. This project does not require a QAPP

Project: Olympia Oysters

Project Plan

Goal: Jamestown S’Klallam Tribe will work with the Clallam County Marine Resources Committee’s Olympia Oyster Restoration Lead and Clallam MRC Coordinator to plan, coordinate and implement the Olympia Oyster Population Surveys.

Participants: MRC members, MRC staff, Jamestown S’Klallam Tribe staff

Activities: Monitor growth and survival of Olympia Oyster restoration efforts in Sequim Bay through the performance of population surveys.

Outputs: Agreements with partners; Monitor Olympia Oyster population, growth and survival on previously restored Olympia Oyster beds in Sequim Bay.

Outcomes: Approximately 1.5 acre of Olympia oysters are monitored

Resources Required

Estimated time commitment for MRC volunteers: 3 days to survey habitat

Estimated time for partners: 30 hours/yr

Estimated time commitment for MRC staff: 30 hours/yr

Estimated cost: \$2704.20/yr

Questions & Comments

- Cost variable depending on survey conditions and County and Tribal staff time.
- Will surveys continue beyond 2025?
- Clarify future goals for the site with Jamestown S’Klallam Tribe staff
- Not open to community volunteers, only MRC members (policy of the Tribe + muddy conditions)

Project: Pigeon Guillemot Nesting Monitoring for 2025

Project Plan

Goal: Monitor Pigeon Guillemot (PIGU) nesting season as an indicator species of nearshore health.

Participants: MRC members, Olympic Peninsula Auditor Society (OPAS) members and public participants.

Activities: Visual monitoring of PIGU spring through summer nesting activities, including feeding and disturbance behaviors and nesting success.

Outputs: Agreements with OPAS partner for refresher training of returning volunteers (or new training for novice observers paired with seasoned observers).

Outcomes: Continued monitoring efforts (since 2016) for Clallam County PIGU colonies along the Straits of Juan de Fuca.

Resources Required

Estimated time commitment for MRC (or OPAS and/or public) volunteers: 1-2 hours per week from June to August (unless extended due to continued PIGU burrow activity into September)

Estimated time for partners: Minimum of 10 weeks of survey time.

Estimated time commitment for MRC volunteer leads (Ed Bowlby and Mary Sue Brancato): 100 hours

Estimated MRC cost: \$200-\$500, depending if OPAS cost-shares this project with MRC for 2025 (looking more likely in 2025).

Commented [GU1]: Bump up cost in case sign replacement is needed

Commented [GU2R1]: In the realm of several hundred dollars

Questions & Comments

Cost variable depending on whether OPAS cost shares with MRC. This is looking more likely in 2025. This is a contribution to the Salish Sea Guillemot Network coordination effort with the Washington Department of Fish and Wildlife Survey123 data management system.

PINTO ABALONE: PROJECT PROPOSAL TO CONTINUE WORK IN FY 2026-2027

Goal: Restoration of Sustainable Pinto Abalone Populations in the Strait of Juan de Fuca

Participants:

Organization	Role and Responsibility
Clallam County Marine Resources Committee (CCMRC)	Project oversight, participation in diver surveys and data collection, education and outreach
Puget Sound Restoration Fund (PSRF)	Manages project planning and implementation, conducts dive surveys, coordinates with CCMRC liaison, creates reports and manages data
Washington Department of Fish and Wildlife (WDFW)	Technical guidance, diver survey vessel support, as needed
Local support vessels	Support for dive surveys, as needed
Local scientific divers	Support for dive surveys, as needed

Activities:

- **Synoptic diver surveys along the Strait of Juan de Fuca (Strait) following standardized abalone survey protocols to document existing remnant abalone populations, identify potential index sites for long-term monitoring, assess areas of interest for future restoration efforts that include outplanting of laboratory-cultured juvenile abalone.**
- **Education and outreach to local Clallam County government and citizens on the importance of abalone to contribute healthy subtidal ecosystems.**

Outputs:

- **Potential improvements to PSRF/WDFW abalone survey protocols for use in the Strait.**
- **Creation of maps and survey data showing the locations of remnant populations (with limited distribution disclaimer).**
- **In collaboration with PSRF and WDFW, identification of possible locations for index sites and potential outplanting locations for abalone monitoring and restoration.**
- **Developing of briefing documents and presentation material for Clallam County government and citizens that highlight the importance of abalone restoration.**

Outcomes

- **Successful completion of this project may result in the restoration of self-sustaining populations of pinto abalone to areas along the Strait where they were extirpated by recreational harvesters.**

- **At a minimum, results from these surveys will provide valuable population data on this state-listed endangered species along the Strait of Juan de Fuca that can be used to inform marine stewardship activities, including oil spill response planning,**

Project: Shoreline Armoring Survey

Project Plan

Goal: The goal of this project is to determine where shoreline armoring currently occurs and make the information public for regulatory and restoration purposes

Participants: MRC member lead/co-lead, staff; contractor

Activities:

- Consult with Snohomish County MRC members involved in similar project
- Consult with County DCD re methods, highest need areas, how to make it most useful, etc.
- Hire aerial shoreline surveyor
 - Pilot
 - Videographer
 - Video analysis / data entry / mapping
 - Geo/biological assessment of prioritized/ relative risk of erosion
 - Prepare report
- Post videos and report online
 - Announce/ disseminate links to regulatory and restoration personnel
 - Conduct public presentation(s)

Outputs:

- Shoreline armoring survey results (map)
- Report useful to regulatory and restoration personnel

Outcomes:

- Reduced risk for armoring projects detrimental to nearshore habitat
- Better restoration outcomes over time

Resources Required

Estimated time commitment for participants:

- **MRC project lead/co-lead:** 10 hours
- **MRC staff:** 10 hours
- **Contractor:** 100 hours (WAG!)

Estimated contract cost: \$25,000 (WAG)

Commented [GU1]: Tim Abbey (works with LEKT) - may be helpful with a better estimate

Questions & Comments

1. Requires buy-in from local gov'ts before it gets started
2. Mostly contracting time from MRC staff
3. Mostly just liaison and supervision time from MRC leads
4. This project does not require a QAPP (I DON'T THINK)

Duties of Clallam MRC Officers and Members

January 2025

Duties of the Chair:

1. Provide leadership and serve as the presiding officer of the board.
2. Chair monthly committee meetings, maintain order, assist board in achieving actions for each meeting, implement Roberts Rules of Order.
3. ~~Create Appoint members to~~ subcommittees and special assignments, and appoint members when necessary.
4. Rule on questions of procedure.
5. Meet with MRC staff to review monthly agenda items, plan the annual cycle of monthly meetings.
6. Conduct business of the MRC between its meetings, in coordination with/as needed by County staff.
7. Sign documents of the committee.
8. Serve as the official spokes person for the group in matters relating to the press. Represent the organization as a spokesperson, at other venues, -as appropriate.
9. Provide annual updates to the Clallam County Board of County Commissioners.
10. Participate in annual NWSC conference if possible.
11. Anticipate contributing up to 10 hours a month conducting this role.

Duties of the Vice-Chair:

1. Act for the chair in the chair's absence.
2. Share tasks with the chair, act as a sounding board, and help with ~~difficult~~ decisions between meetings.
3. Liaise regularly with the chair about agenda items and current issues.
4. ~~Address complaints made about the chairperson.~~ Assist chair with unresolvable communications issues.
5. Provide support/coordination on MRC business between meetings.
6. Participate in annual NWSC conference if possible.
7. Anticipate contributing up to 8 hours a month conducting this role.

Duties of Field Project Leads/Co-Leads:

1. Work closely with County MRC staff on planning and implementing the project, and be familiar with reporting forms and timeline for when reports are due.
2. In coordination with MRC staff, maintain project team effectively, delegate tasks, monitor progress, identify and mitigate risks, communicate with team, make decisions, solve problems, and ensure the project is delivered on time and within budget, all while maintaining a focus on achieving project goals.

Commented [AK1]: Existing committee procedures in Clallam County? Reach out to Loni

Commented [AK2R1]: Switch to a positive outlook: e.g. assist the chair with unresolvable communication issues. etc

Commented [GU3R1]: i like that. it could evolve into "taking over" certain communication issues but i doubt that will happen.

3. Make sure project gear is functioning properly and work with MRC staff to maintain as needed.
4. Follow the project QAPP (Quality Assurance Project Plan) and assist in developing and updating QAPP as project timelines dictate.
5. Submit draft yearly report using data, findings, and other information to MRC staff 3-4 weeks before reports are to be submitted to the grant entities. Reports may be needed quarterly, semi-annually, or annually, depending on the grant requirements.
6. Respond timely to MRC staff requests for data, information, and review of documents, in addition to providing a supporting role to MRC staff and the NWSC.
- ~~7. Treat committee members and MRC staff with respect and kindness.~~

Duties of Members:

- ~~1. Treat committee members and MRC staff with respect and kindness.~~
- ~~2. Responsible for contributing to meetings, Regularly attend meetings and participate.~~
- ~~3. Actively engaging in at least one field or educational project team, including regular project team communication and assistance when leads put out a request for help with projects and communicating team business.~~
- ~~4. Actively volunteer for two or more public education/outreach events each year.~~
- ~~5. Actively volunteer to serve, for example as an officer, NWSC rep, field project or educational team lead, or and on advisory or other sub-committees when formed.~~
- ~~6. Anticipate contributing 4-6 hours a month (or more, depending on commitments).~~
- ~~7. Engage as a project lead or co-lead of existing or proposed MRC projects, obtain Obtain required training to carry out projects (ex: WDFW sampling training, HAZWOPR training) and propose new projects for grant biennium.~~
- ~~8. Actively assist on projects when leads put out a request for help.~~
- ~~9. Stay current on environmental issues and changes impacting the nearshore and community.~~
- ~~10. Be good stewards and promote strong partnerships within our community.~~
- ~~11. Participate in annual NWSC conference, if possible.~~
- ~~12. Communicate and liaise regularly with the population or organization represented by your MRC role.~~
- ~~13. Communicate with your alternate regularly, especially so that they can be sure to attend meetings if you are unable.~~
- ~~14. Communicate with the Chair and MRC staff if you are not able to attend a meeting and if your alternate will be in attendance to fill in for you.~~

Formatted: Font: (Default) Arial, 12 pt

Duties of Alternates:

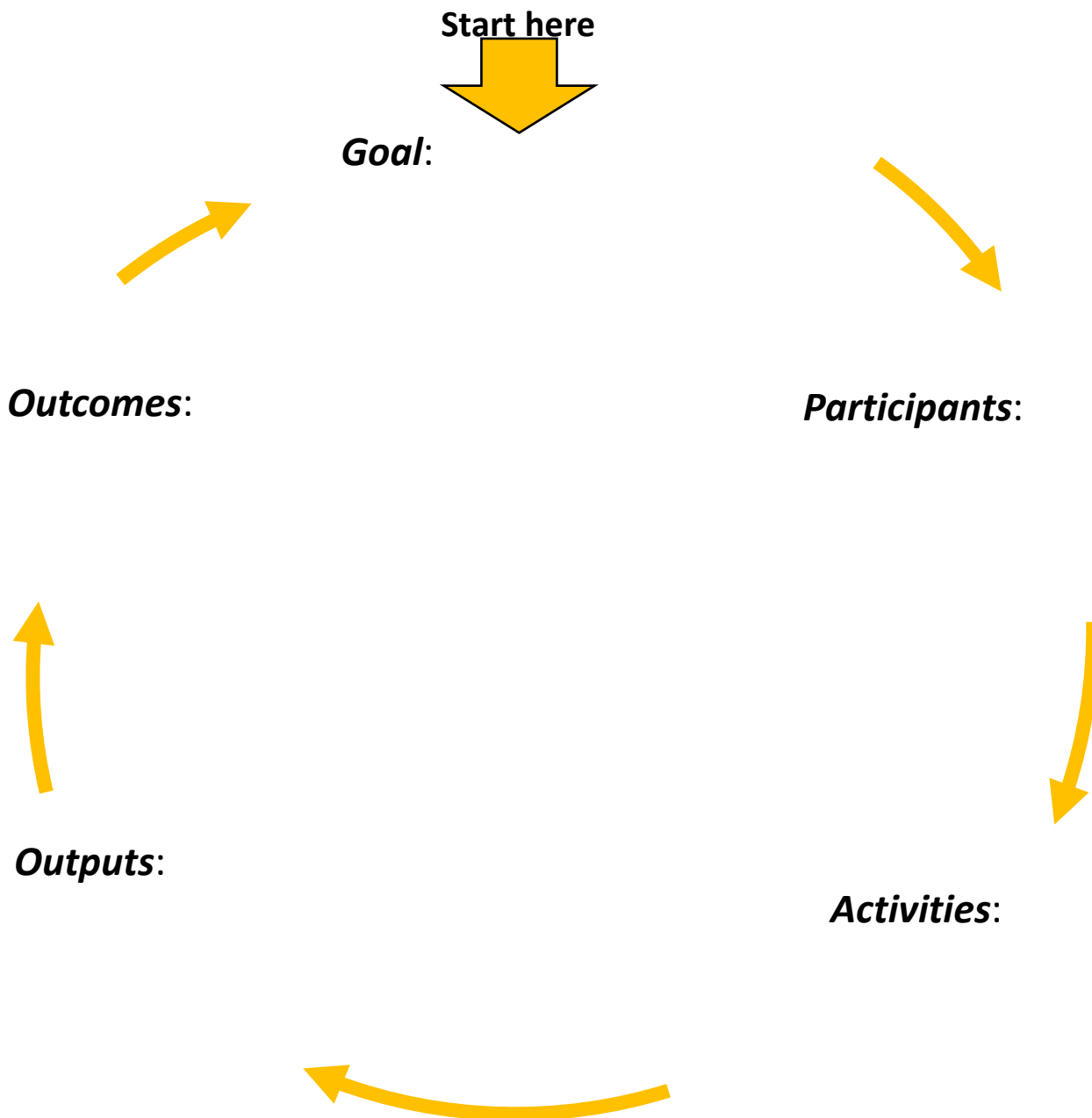
1. Communicate with their corresponding ~~lead~~ member ~~representative~~ regularly.
2. Actively assist on field and education projects, ~~when leads put out a request for help.~~
3. Be good stewards and promote strong partnerships within our community.
4. Stay current on environmental issues and changes impacting the nearshore and community.
5. Anticipate contributing 4-6 hours a month (or more, as needed).
6. Alternates are allowed to vote only when they are filling in for the ~~lead~~ member.
7. Alternates should try to attend monthly meetings, even if the ~~member~~~~lead~~ is in attendance.

Duties of Northwest Straits Commission Representative:

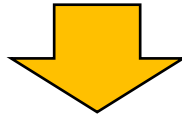
1. Clallam County MRC representative is required to attend monthly meetings (~~both~~ in-person ~~or~~~~and~~ on Zoom).
2. Represent the Clallam MRC at the NWSC meetings.
3. Be the liaison between the NWSC and MRC staff/members.

NW Straits 2024 Conference - Science Advisory Committee (SAC) Session Worksheet

Instructions: The project wheel worksheet is broken down into steps to help you map out your project design for a new idea/or existing project. Definitions are on the back of this worksheet. Complete as much of this worksheet as you can on a specific idea, new or ongoing project you would like to discuss with the SAC. Start with your goal and use this wheel as a tool to identify what you are trying to accomplish and flag where you have questions or need guidance from the SAC.



Start here



Goal: if/when this project succeeds, [...] will happen, be known

drive assessment of whether and how project can meet the goal, or needs to be changed it in the next round

can not be achieved without specific, named

Outcomes: how the activities and outputs measurably further the goal(s) of the project.

which, once accomplished facilitate these measureable movements towards the goal

Participants: all groups (e.g., MRC staff, volunteer members, other organization(s)) directly involved in the work

can be assigned to all of the project

Outputs: any tangible products of the work (e.g., pamphlets, signage, graduates of a training program, number of invasives found, wildlife counted, acres cleaned, sites added, etc.)

directly result in discrete or countable

Activities: the tasks & actions - science, monitoring, training, presentations, etc. accomplished by the project participants

Northwest Straits Commission Science Advisory Committee - Project Wheel